



POLLUTION INCIDENT RESPONSE MANAGEMENT PLAN

Environment Protection Licence Number:

1	PURPOSE.....	3
2	DEFINITION OF MATERIAL HARM TO THE ENVIRONMENT.....	3
3	ENVIRONMENT PROTECTION LICENCE (EPL) DETAILS.....	3
4	POLLUTION INCIDENT – PERSON/S RESPONSIBLE	4
5	NOTIFICATIONS – RELEVANT AUTHORITIES.....	5
6	NOTIFICATIONS – NEIGHBOURS AND LOCAL COMMUNITY	5
7	HAZARDS – DESCRIPTION AND LIKELIHOOD.....	6
8	POLLUTANTS.....	8
9	SAFETY EQUIPMENT.....	8
10	COMMUNICATING WITH NEIGHBOURS AND THE LOCAL COMMUNITY	8
11	MAPS AND SITE PLANS	9
12	INCIDENT RESPONSE	12
13	COORDINATING WITH PERSONS	13
14	TRAINING	13
15	Testing and Updating the PIRMP	13

1 PURPOSE

Blue Ridge Quarries holds an Environment Protection Licence with the NSW Environment Protection Authority (EPA) for the Blue Ridge Quarry at Eurobodalla Road Bodalla. As per the *Protection of the Environment Operations Act 1997* (the POEO Act), the holder of an Environment Protection Licence must prepare, keep, test and implement a pollution incident response management plan (PIRMP) that complies with Part 5.7A of the POEO Act in relation to the activity to which the licence relates.

If a pollution incident occurs in the course of an activity so that material harm to the environment (within the meaning of section 147 of the POEO Act) is caused or threatened, the person carrying out the activity must **immediately** implement this plan in relation to the activity required by Part 5.7A of the POEO Act.

A copy of this plan must be kept at the licensed premises, or where the activity takes place in the case of mobile plant licences and be made available on request by an authorised EPA officer and to any person who is responsible for implementing this plan.

Parts of the plan must also be available either on a publicly accessible website, or if there is no such website, by providing a copy of the plan to any person who makes a written request. The sections of the plan that are required to be publicly available are set out in section 74 of the Protection of the Environment Operations (General) Regulation 2022.

2 DEFINITION OF MATERIAL HARM TO THE ENVIRONMENT

This plan must be activated in the event of a *pollution incident* that causes or threatens *material harm* to the environment.

Pollution incident means a leak, spill or other escape or deposit of a substance, which causes or is likely to cause pollution (does not include an incident involving only the emission of noise).

Pollution means (broadly) release or introduction of any substance to air, land or water.

Material harm means actual or *potential* harm to health or safety of human beings or ecosystems that is not trivial, cost to make good exceeds \$10,000. Includes incidents that only impact the premises where the incident occurs.

3 ENVIRONMENT PROTECTION LICENCE (EPL) DETAILS

Name of licensee:	Blue Ridge Quarries Pty Ltd ABN 29 632 266 472 - ACN 632 266 472
EPL number	11776
Premises name and address:	Blue Ridge Quarry Nerrigundah Mountain Rd Bodalla NSW Lot 1 DP1165095
Company or business contact details (business hours)	Name: Aaron Millikin Position or title: Quarry Manager Business hours contact number: 0414 097742 Email: sarah@blueridgequarries.com.au
Company or business contact details (after hours)	Name: Aaron Millikin Position or title: Quarry Manager Business hours contact number: 0414 097742 Email: sarah@blueridgequarries.com.au

Environmental concerns or complaints	Business hours contact number: 02 44740222 After hours contact number: 0414 097742
Website address	In production
Scheduled activity/activities on EPL:	Composting Crushing, grinding or separating Extractive activities, Resource recovery
Fee-based activity/activities on EPL:	Composting 0-5000 T annual capacity to receive organics Crushing, grinding or separating > 30000-100000 T annual processing capacity Extractive activities > 100000-500000 T annually extracted or processed Recovery of general waste Any general waste recovered
Ancillary activities on EPL:	None

4 POLLUTION INCIDENT – PERSON/S RESPONSIBLE

Responsibility	Person Responsible
PIRMP activation	Name: Aaron Millikin Position or title: Quarry Manager Business hours contact number: 0414 097 742 Email: sarah@blueridgequarries.com.au
Notifying relevant authorities Notification should be made by a person with an appropriate level of authority within the company.	Name: Sarah Millikin Position or title: Business Manager Business hours contact number: 044 9712 720 Email: sarah@blueridgequarries.com.au
Managing response to pollution incident	Name: Aaron Millikin Position or title: Quarry Manager Business hours contact number: 0414 097 742 Email: sarah@blueridgequarries.com.au

5 NOTIFICATIONS – RELEVANT AUTHORITIES

Incidents that cause or threaten material harm (actual or potential harm that is not trivial, e.g. loss/damage ~ \$10,000) must be reported to **all** relevant authorities **immediately**.

Authority	Contact Number
Fire and Rescue NSW / Rural Fire Service (first notification)	000
EPA	131 555
Moruya Hospital	02 4474 2666
SafeWork NSW	131 050
Eurobodalla Shire Council	02 4474 1000
NSW Resources Regulator	1300 814 609

6 NOTIFICATIONS – NEIGHBOURS AND LOCAL COMMUNITY

Neighbours potentially impacted by a pollution incident at Blue Ridge Quarry are those listed in Table 1 that own properties within approximately of 2.0km of the quarry (see Figure 3 in Section 11).

Notification of neighbours is the responsibility of the Quarry Manager but may be delegated to a suitably trained person at the discretion of the Quarry Manager and in consultation with the NSW Resource Development and Environment Manager. It is the responsibility of the Quarry Manager to inform and update the NSW Resource Development and Environment Manager and to record the incident in O4i in accordance with ENV-PRO-001 Environmental Incident Management Procedure.

Table 1: Potentially impacted neighbours proximate to Blue Ridge Quarry

Neighbour Name(s)	Address	Lot Number(s)	Contact Details	Communication requirements
Peter Motby	Nerrigundah Mountain Rd Bodalla NSW	Lot 1 DP 1241559	0437321476	Blasting activities Any excessive omissions of dust or contaminated water that impacts property
Troy Hollis	P O BOX 105 Bodalla 2545 350 Commarang Forrest Road Bodalla	Lot 2 DP1165095	0427735734	Blasting activities Any excessive omissions of dust or contaminated water that impacts property

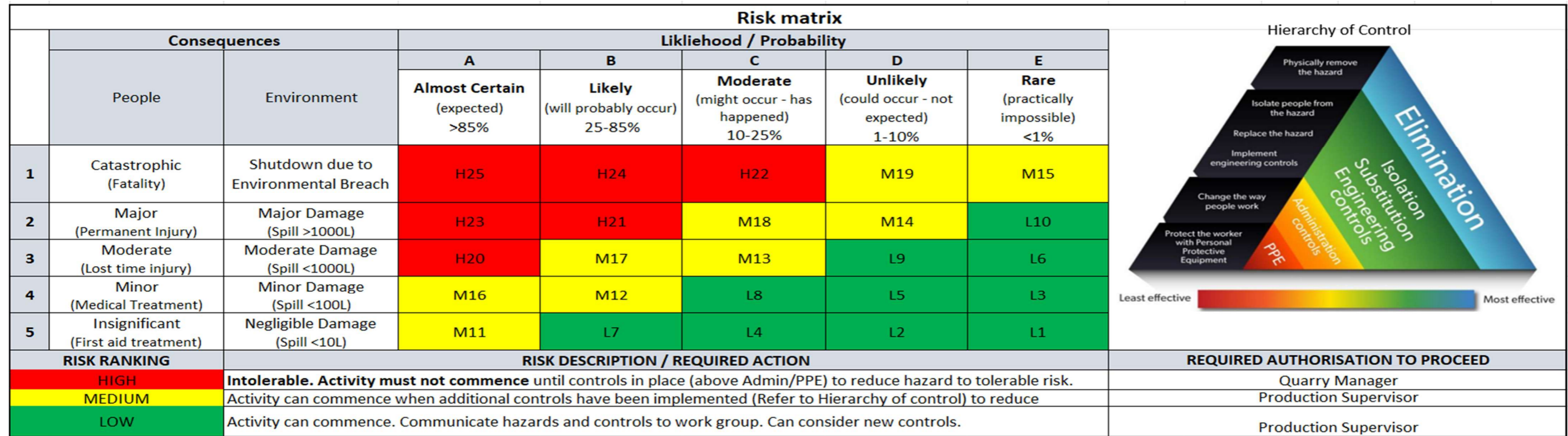
7 HAZARDS – DESCRIPTION AND LIKELIHOOD

TABLE 2: BLUE RIDGE QUARRY RISK ASSESSMENT

HAZARD	POLLUTION INCIDENT (MATERIAL HARM)	RISK ASSESSMENT PRIOR TO PRE-EMPTIVE ACTIONS INHERENT RISK			PRE-EMPTIVE ACTIONS	RISK ASSESSMENT AFTER PRE-EMPTIVE ACTIONS RESIDUAL RISK			MONITORING AND CONTINUOUS IMPROVEMENT	
		LIKELIHOOD	CONSEQUENCE	RISK RATING		LIKELIHOOD	CONSEQUENCE	RISK RATING	ASPECT TO BE MONITORED	DETAILS OF MONITORING AND CONTINUOUS IMPROVEMENT
Oils, Lubricants and Other Hazardous Materials	Spill resulting in ecosystem damage to receiving waterway	C	3	M13	<ul style="list-style-type: none"> Storage and handling of hydrocarbons is in accordance with AS 1940 and the Dangerous Goods Act 1975 Oils and lubricants to be stored in bunded and sealed area Only 200l of oils and lubricants to be stored on site for use All waste oils and lubricants removed from site Machine oil and lubricant capacity 350l 	D	4	L5	<ul style="list-style-type: none"> Any oil spill to be monitored and assessed for volume and potential impact 	Nil
Fuel (diesel and petrol)	Spill resulting in ecosystem damage to receiving waterway	C	2	M18	<ul style="list-style-type: none"> Storage and handling of hydrocarbons is in accordance with AS 1940 and the Dangerous Goods Act 1975 Minimal fuel stored on site <100l Fuel brought to site in 4000l mini tanker that complies with relevant standards Trained and competent workers to operate mini tanker 	D	3	L9	<ul style="list-style-type: none"> Any fuel spill to be monitored and assessed for volume and potential impact 	Nil
Dust	Excessive dust from crushing and screening Dust from blasting activities Dust from excessive road movements Dust from high winds	B	4	M12	<ul style="list-style-type: none"> Dust suppression with water cart on processing stockpiles and roads Weather monitoring for wind speed and directions Blast management plan Adverse weather TARP 	D	4	L5	<ul style="list-style-type: none"> Blasting and production activities to ensure dust is not leaving site in excessive amounts 	Nil
Noise	Excessive noise impacting neighbours	D	5	L2	<ul style="list-style-type: none"> Equipment maintenance procedures Blast management plan and procedures Only operate during consent and EPL hours 	D	5	L2	<ul style="list-style-type: none"> Blasting and production activities to ensure dust is not leaving site in excessive amounts 	Nil
Vibration	Vibration from blasting	B	4	M12	<ul style="list-style-type: none"> Blast design by competent person Blast management plan and procedures to be followed Trained and competent people to manage blast activities 	D	4	L5	<ul style="list-style-type: none"> Blasting vibration monitoring 	Nil
Surface water	Contaminated Surface water leaving site during rain event	C	2	M18	<ul style="list-style-type: none"> All rain and surface water runs to bottom of pit and is collected Water is tested to ensure it complies with EPL before discharge 	D	3	L9	<ul style="list-style-type: none"> Ongoing water monitoring at discharge points 	Nil

This risk assessment has been conducted utilising the following matrix.

FIGURE 1: BLUE RIDGE QUARRIES RISK MATRIX



8 POLLUTANTS

Figure 3 in Section 11 provides the locations of stored pollutants (not in machines) described in the table below.

Location/tank	Pollutant	Maximum Volume
Hydrocarbon storage	Diesel fuel	200l
	Oils/lubricants	200l

9 SAFETY EQUIPMENT

Figure 4 in Section 11 provides the locations of safety equipment described in the table below.

Equipment	Location
Fire extinguishers	Site Office
Spill kits	Service Truck
Bunding	As needed
Personal Protective Equipment (PPE)	Site Office
Eye Wash station	Site Office
First aid kits	Site Office
Defibrillator	Site Office

Additionally, a review of control measures will be undertaken in the event of an incident on site or if an audit finds a deficiency in a control measure, or for any circumstance outlined in section 15 of the Regulation.

10 COMMUNICATING WITH NEIGHBOURS AND THE LOCAL COMMUNITY

Each neighbour within 2km of the quarry will receive an in-person visit by Blue Ridge Quarries staff and a copy of this PIRMP with explanation of contact details for notifying Blue Ridge Quarries of complaints or concerns.

Specific messages in the event of a material pollution incident:

- Dust: persons in the affected area should close windows and doors and remain inside until advised otherwise by Blue Ridge Quarries or emergency services.
- Fire: implement fire safety plan and follow advice of emergency services
- Spill to waterways: avoid entering or fishing in downstream waterways
- Pests, weeds and disease: type of pest, weed or disease, location of outbreak, maintain vigilance

Minimising harm to persons on the premises

- Evacuate and assemble at the evacuation point
- Initiate notifications, including emergency services
- Activate the emergency response plan

11 MAPS AND SITE PLANS

Figure 1: Location of quarry and potentially impacted area

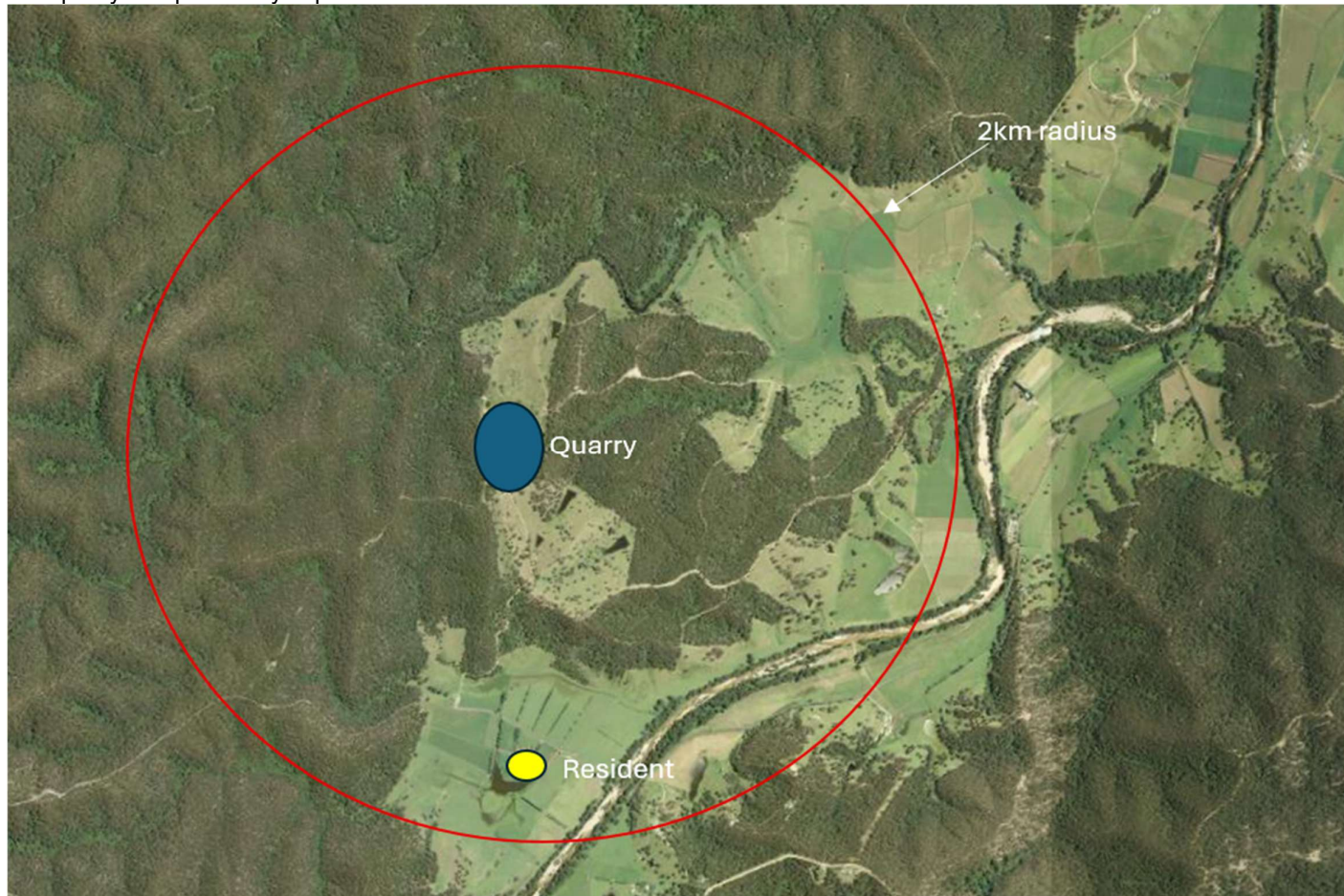


Figure 2: Location of potentially impacted neighbours with dwellings proximate to the quarry

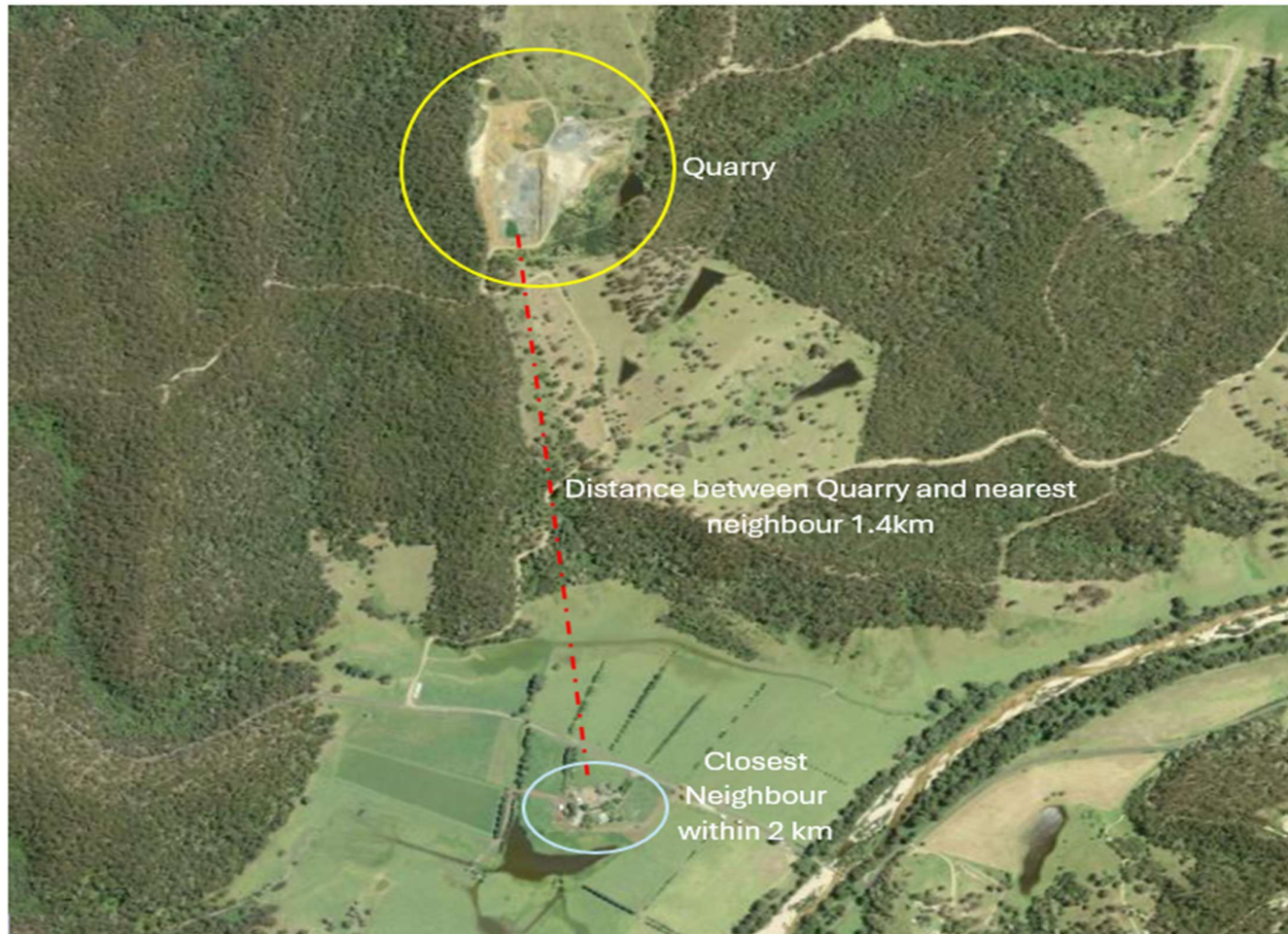


Figure 3: Location of pollutants, safety equipment and surface water systems



12 INCIDENT RESPONSE

Actions to be taken during or immediately after a pollution incident and the person responsible.

Note: Actions should only be taken if safe to do so.

		Immediate Response	Early Warning		Mitigating Actions		Communication Updates		Clean Up		Close Out		
		Quarry Manager	Quarry Manager	Mine Operator	Quarry Manager	Mine Operator	Quarry Manager	Mine Operator	Quarry Manager	Mine Operator	Quarry Manager	Mine Operator	
Incident (material harm)	Dust	Excessive dust resulting in nuisance to neighbours	Shut down dust generating plant and/or equipment	Text message/call to neighbours	Notify EPA	<ul style="list-style-type: none"> Identify source of excessive dust generation Activate dust suppression if not already active Redirect water cart to most heavily affected area 	<ul style="list-style-type: none"> Review weather data Assess clean up obligations 	Text message/call to neighbours	Update EPA	As directed by NSW Resource Development and Environmental Consultant	Liaise with Quarry Manager to ensure clean up meets obligations	<ul style="list-style-type: none"> Text message to neighbours Report incident Provide information for investigation 	<ul style="list-style-type: none"> Conduct investigation Provide report to EPA
	Chemical Spill	Hydrocarbon or Oil spill more than 100lt	Activate response to contain spill as to not enter any water way	Text message/call to neighbours	Notify EPA	<ul style="list-style-type: none"> Use spill kits and sand to contain spill Build bunds/berms around spill 	<ul style="list-style-type: none"> Ensure adequate resources for clean up 	Text message/call to neighbours	Update EPA	As directed by NSW Resource Development and Environmental Consultant	Liaise with Quarry Manager to ensure clean up meets obligations	<ul style="list-style-type: none"> Text message to neighbours Report incident Provide information for investigation 	<ul style="list-style-type: none"> Conduct investigation Provide report to EPA
	Blasting	Air pressure or ground vibration exceedance either as peak threshold or as cumulative (over 5%) of exceedance	Not required	Advise any impacted neighbours if any	Notify EPA	Review all possible causes and implement controls before next blast	<ul style="list-style-type: none"> Ensure adequate resources for investigation 	Not required	Update EPA	Not required	Not required	<ul style="list-style-type: none"> Text message to neighbours Report incident Provide information for investigation 	<ul style="list-style-type: none"> Conduct investigation Provide report to EPA
	Discharge of water from site	Uncontrolled discharge of water	Contain water to minimise discharge	Text message/call to neighbours	Notify EPA	<ul style="list-style-type: none"> Identify source of water discharge Redirect or block water to mitigate discharge 	<ul style="list-style-type: none"> Ensure adequate resources available to stop water discharging from site 	Text message/call to neighbours	Update EPA	As directed by NSW Resource Development and Environmental Consultant	Liaise with Quarry Manager to ensure clean up meets obligations	<ul style="list-style-type: none"> Text message to neighbours Report incident Provide information for investigation 	<ul style="list-style-type: none"> Conduct investigation Provide report to EPA

13 COORDINATING WITH PERSONS

Initial notifications and status updates to neighbours will be undertaken by the Quarry Manager or their delegate as described in Section 6.

Initial notifications to regulatory authorities will be undertaken by the NSW Resource Development and Environment Manager or their delegate.

Coordination with regulatory authorities and emergency responders that attend site will be managed by the Quarry Manager or their delegate.

Status updates to, regulatory authorities, and emergency responders that are not on site will be managed by the NSW Resource Development and Environment Manager or their delegate.

14 TRAINING

Nature of Training	Training Objectives
Site Induction	Ensure that all personnel entering the site are aware of the hazards and control measures and any specific site conditions within the quarry
Emergency Response	During the testing of this PRIMP workers will have the opportunity to be trained on the emergency response equipment such as spill kit contents and use of these items. Formal fire extinguisher training.

15 Testing and Updating the PIRMP

It is a legal requirement to test the plan every 12 months and within one month of any pollution incident that caused or threatened material harm to the environment.

The PIRMP testing form is located on the Blue Ridge Quarries OneDrive. Actions and updates to the PIRMP are managed in accordance with the Records Management procedure.